

IC 310 S, IC 310 S PLUS

An universal electrically operated one-hose dry ice blaster with a pellet grinding function, designed for a wide range of cleaning tasks.



Standard dry ice pellets
1.5 mm / 3 mm



**Superior performance
& power**



**Versatile allows both - fine
& aggressive cleaning**



**Simple operation
Easy maintenance**



**Compact size
Mobile version**

PLASTIC NOZZLE

FOLDING HANDLE

ERGONOMIC BLAST GUN
WITH A SAFETY SWITCH
AND LED LIGHT

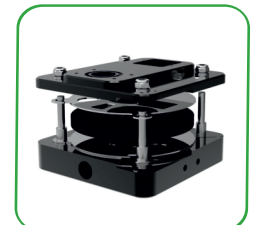
7 m BLAST HOSE 3/4"
WITH ANTI - KINK
SPRING HOSE GUARD

ANTI-VANDAL BUTTONS

DIGITAL CONSUMPTION
INDICATOR

INSULATED HOPPER

STAINLESS STEEL
HOUSING



PATENTED FEEDING SYSTEM



PRESSURE CONTROL,
DRY ICE CONSUMPTION CONTROL



ANTI - CLOGGING SYSTEM



STAINLESS STEEL QUICK CONNECT



Development



Manufacturing



Maintenance
and Repair



Training

Characteristics

The professional dry ice blaster IC310 S is our most powerful machine and covers most cleaning applications. The patented pellet grinding system produces very small particles that can remove dirt from highly sensitive surfaces such as high-gloss moulds, pneumatic and electric lines, machine control panels, etc.

You can choose between microparticle cleaning of delicate surfaces and the standard 3 mm pellet mode of heavier soiling by pressing Switch to a single button on the control panel.

The jet nozzles are shaped to increase the speed of the pellets before hitting the cleaned surface.

The stainless steel frame and the housing of the machine guarantee a long service life. The machine requires minimum maintenance costs even in the most difficult operating conditions.

With its sophisticated design and outstanding technical parameters, you can set yourself apart from the competition with the Dry Ice Blaster IC 310 S. If you are looking for versatility, power and effectiveness combined in one machine, it is IC 310 S ready to tackle any cleaning challenge.

Technical specifications

- | | | |
|--|---|---|
| <ul style="list-style-type: none">■ Dimensions
Length: 560mm
Width: 387 mm
Height: 795 mm (1007 mm with the handle) | <ul style="list-style-type: none">■ Consumption
Dry ice: max. 100 kg/h
Compressed air: 1 - 12 m³/min.
(35,3-424 CFM) depending on the nozzle type | <ul style="list-style-type: none">■ Weight
Empty machine:
73 kg (without the hose) |
| <ul style="list-style-type: none">■ Operating pressure
max. 16 bar / 14,5 - 232 PSI | <ul style="list-style-type: none">■ Hopper capacity
10 kg | <ul style="list-style-type: none">■ Material
Casing: stainless steel |
| <ul style="list-style-type: none">■ Service supply connections:
Compressed air : DIN 3489 claw coupling
Electrical : 210W, 110-240 V , 50-60 Hz | <ul style="list-style-type: none">■ Noise level
60 – 120 dB (A) depending on the blasting pressure, nozzle type and the cleaned surface | |

IC 310 S



IC 310 S PLUS



Standard package contents

- | | |
|---|---|
| <ul style="list-style-type: none">■ Blast hose
7 m 3/4" | <ul style="list-style-type: none">■ Ergonomic Blast gun
With safety switch |
| <ul style="list-style-type: none">■ Plastic nozzle RN-10-08
round nozzle suitable for a wide range of uses | |

PLUS Accesories

- | | |
|---|---|
| <ul style="list-style-type: none">■ Flex case II. PLUS
Set of extra nozzles & extensions | <ul style="list-style-type: none">■ LED light for gun
IG-10-02-000 |
| <ul style="list-style-type: none">■ Compressed air hose
10 m 3/4" | <ul style="list-style-type: none">■ Ice shovel
2 kg Capacity |



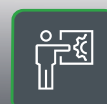
Development



Manufacturing



Maintenance
and Repair



Training